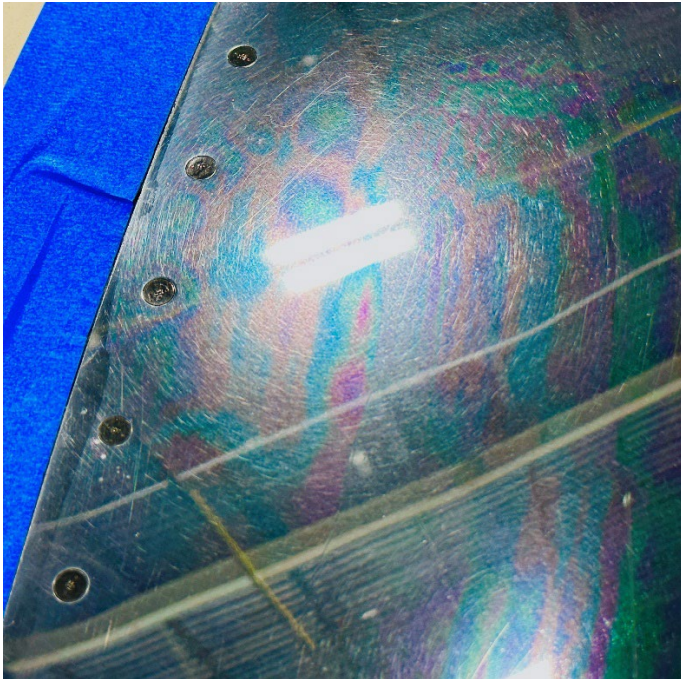


## SKYDE CLEAR

**Product Name:** Skyde Clear

### **Application defect & Identification.**

When Skyde Clear is applied incorrectly, defects can appear and are identifiable and can be repaired or avoided. Below are some application defects and the cause.



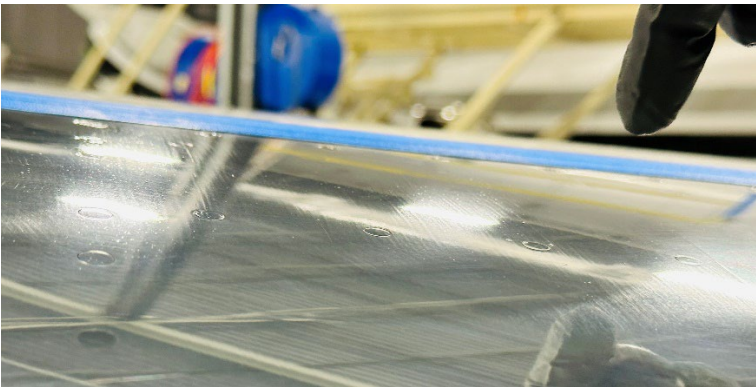
Halo / Rainbow effect.

This effect is due to a lack of product on the applicator pad during application. The solution is to ensure more product is on the pad before application.



### Blotching / Pullaway

This is the result of some of the previous coating or protection still present before application. Re-polish with G6, S etc and repeat the application.



### Drag Lines

This is the result of having an excessively thick coating.



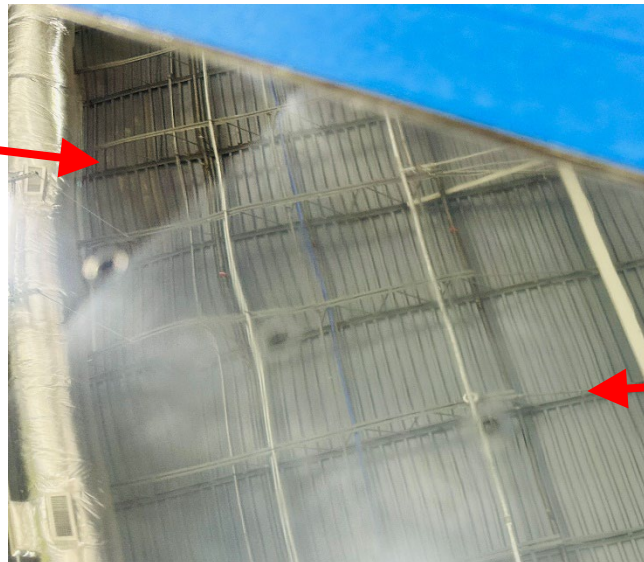
### Build Up Line

When applying, ensure that the junction between each pass meets without excessive overlapping.

## Maintaining the coating.

After flight, general cleaning of deicing fluid, dust, watermarks, bugs and insects can be removed using Nuvite SS93 cleaner. If however after numerous flight hours, some dulling and loss of gloss can occur due to air blast caused by dust particles in the atmosphere impacting the surface when flying. This dulling of the coating can be easily restored with Nuvite NuPower II polished with a Cyclo polisher and foam pads.

Polished with NuPower II



Dull area as a result of air blast erosion.